

STANDARD FOR KoShamo

The Ko Shamo belongs to the Japanese class of Gamefowl breeds. This breed is a true bantam, having no large fowl counterpart. To enable indoor keeping of game fowl, the Japanese created the Ko Shamo. It is a small game breed still in possession of a game character. The Ko Shamo is a strong, muscular bird, with body portions comprised of 3 equal parts, 1/3 head and neck, 1/3 body, and 1/3 leg. Feathers on both males and females are short, hard, and sparse. Bare skin is visible at the breastbone, vent, and wing points. Ko Shamo attributes include a cocky attitude, upright stance, prominent shoulders, split in both wings between the primary and secondary wing feathers, and a tiny prawn tail. Males sometimes walk on their front toes. Ko Shamos are similar to other Asian hard-feathered breeds, in that they can possess an aggressive disposition. However, with little handling, they become tame very quickly.

Disqualifications

Lacking a split in both wings between the primary and secondary feathers. Horizontal carriage of body. (See General Disqualifications and Cutting for Defects).

Standard Weights

Cock.....36 oz Hen28 oz

Cockerel.....28 oz Pullet22 oz

Shape - Male

COMB: Chrysanthemum, firm, set close to the head. Cockerels present a pea-like shaped comb, maturing to a chrysanthemum.

BEAK: Thick, short and well curved.

EYES: Large, round and prominent. Alert.

FACE AND THROAT: Red wrinkled skin, dewlap of bare skin, devoid of feathers.

WATTLES: Very small or absent.

EAR-LOBES: Firm, thick and somewhat wrinkled.

HEAD: Large with a prominent brow, giving a menacing expression.

NECK: Long, strong, almost erect and curved slightly backwards, tapering to back. Hackle feathers are short and narrow, hardly reaching base of neck. BACK: Medium length and broad. Widest at the shoulders, sloping downward to the tail, backline is straight. Saddle feathers are sparse, narrow and short.

TAIL: Short, slightly fanned sickles and tail converts very short, curved forming a “prawn” tail. Below horizontal with slight rise at base of back.

WINGS: Short, compact, prominent at the shoulders, and tucked in at stern. Both wings are split between primary and secondary feathers. Shoulders are powerful and fairly wide.

BREAST: Wide, deep, well rounded and muscular. Bare of feathers at keel line.

BODY AND STERN: Firm and muscular, narrowing gradually towards the tail. Angular shoulders are broadest part of body. Stern is firm and well tucked up.

LEGS AND TOES: Thighs are medium length, well-muscled and rounded. Legs are set well apart. Shanks are thick, straight, and medium length. Four toes, thick at base, short and well spread.

HARDNESS OF FEATHERS: feathers short lying close, hard, firm and strong.

STATION: Very upright (Add 10 points for station)

NOTE---Body to be comprised of 3 equal parts. 1/3 head and neck, 1/3 body, and 1/3 legs.

Shape - Females

COMB: Chrysanthemum, less prominent than males. Pullets present small pea-like comb, maturing into chrysanthemum.

BEAK: Short, stout and well curved

EYES: Large, round and prominent. Alert

FACE AND THROAT: Red skin, devoid of feathers.

WATTLES: Very small or absent

EAR-LOBES: Small

HEAD: Broad, short with prominent brow

NECK: Long, strong, curved slightly and almost erect.

BACK: Medium length, wide, widest at shoulders, tapering to tail. Backline is straight.

TAIL: short, compact, main tail feathers are open, having the shape of a prawn. Below horizontal with slight rise at base of back.

WINGS: Short, compact, prominent at shoulders, tucked in toward stern. Both wings are split between primary and secondary feathers.

BREAST: Wide, deep, well rounded and muscular. Bare of feathers at keel line.

BODY AND STERN: Firm and muscular, narrowing towards tail. Stern is firm and well tucked up.

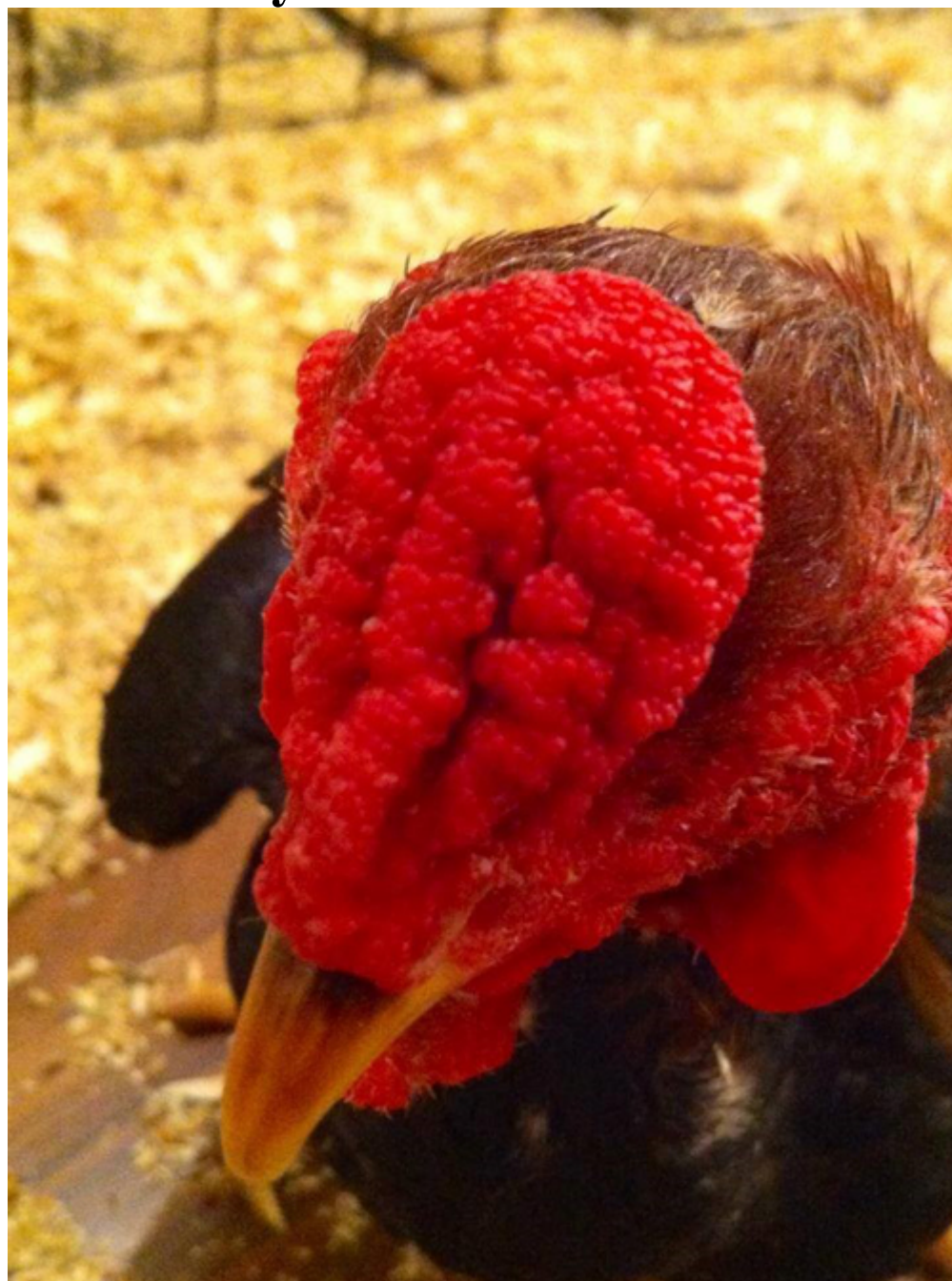
LEGS AND TOES: thighs are medium length, muscled, and rounded. Legs are set well apart. Shanks are thick, medium length, straight. Four toes, thick at base, short and well spread.

HARDNESS OF FEATHERS: Feathers short lying close, hard, firm, and strong.

STATION: Upright. (Add 10 points for station)

NOTE: Body to be comprised of 3 equal parts. 1/3 head and neck, 1/3 body, and 1/3 legs.

Chrysanthemum Combs







Wheaten Ko Shamo Male

COMB, FACE, WATTLES & EAR-LOBES: Bright Red. BEAK: Yellow or dusky yellow, yellow preferred.

EYES: Pearl preferred. Light reddish bay acceptable.

HEAD: Reddish orange.

NECK: Reddish orange. Front of neck: Black.

BACK: Dark red. Saddle: Dark red.

TAIL: Main Tail: Black. Sickles: Lustrous greenish sheen. WINGS: Shoulders & Bows: Dark red. Coverts: Black. Primaries: Black, outer webs edged with bay. Secondaries: Part of outer webs forming wing bay: Reddish bay. All other secondaries black.

BREAST: Black.

BODY & STERN: Black.

LEGS & TOES: Thighs: Black. Shanks & Toes: Yellow to dusty yellow.

UNDERCOLOR OF ALL SECTIONS: Light slate.

Wheaten Ko Shamo Female

COMB, FACE, WATTLES & EAR-LOBES: Bright red. BEAK: Yellow or dusky yellow, yellow preferred.

EYES: Pearl preferred. Light reddish bay acceptable.

HEAD: Golden brown.

NECK: Hackle: Rich golden wheaten. Front of neck: Creamy wheaten.

BACK: Creamy golden wheaten.

TAIL: Two Top Main Tail Feathers: Rich wheaten, slightly stip-pled with brownish black. Main Tail: Ashy wheaten, stippled with brownish black, outer web slightly edged with wheaten.

WINGS: Fronts, Bows, Coverts: Creamy wheaten. Primaries: Outer Web: Creamy wheaten. Inner Web: Ashy wheaten stippled with brown-ish black. Secondaries -Outer Web: Rich creamy wheaten. Inner Web: Ashy wheaten shaded with brown-ish black.

BREAST: Creamy wheaten.

BODY & STERN: Light creamy wheaten.

LEGS & TOES: Thighs: Upper part same as body and stern, lightening to the lower thigh. Shanks & Toes: Yellow to dusty yellow.

UNDERCOLOR OF ALL SECTIONS: Very light cream.